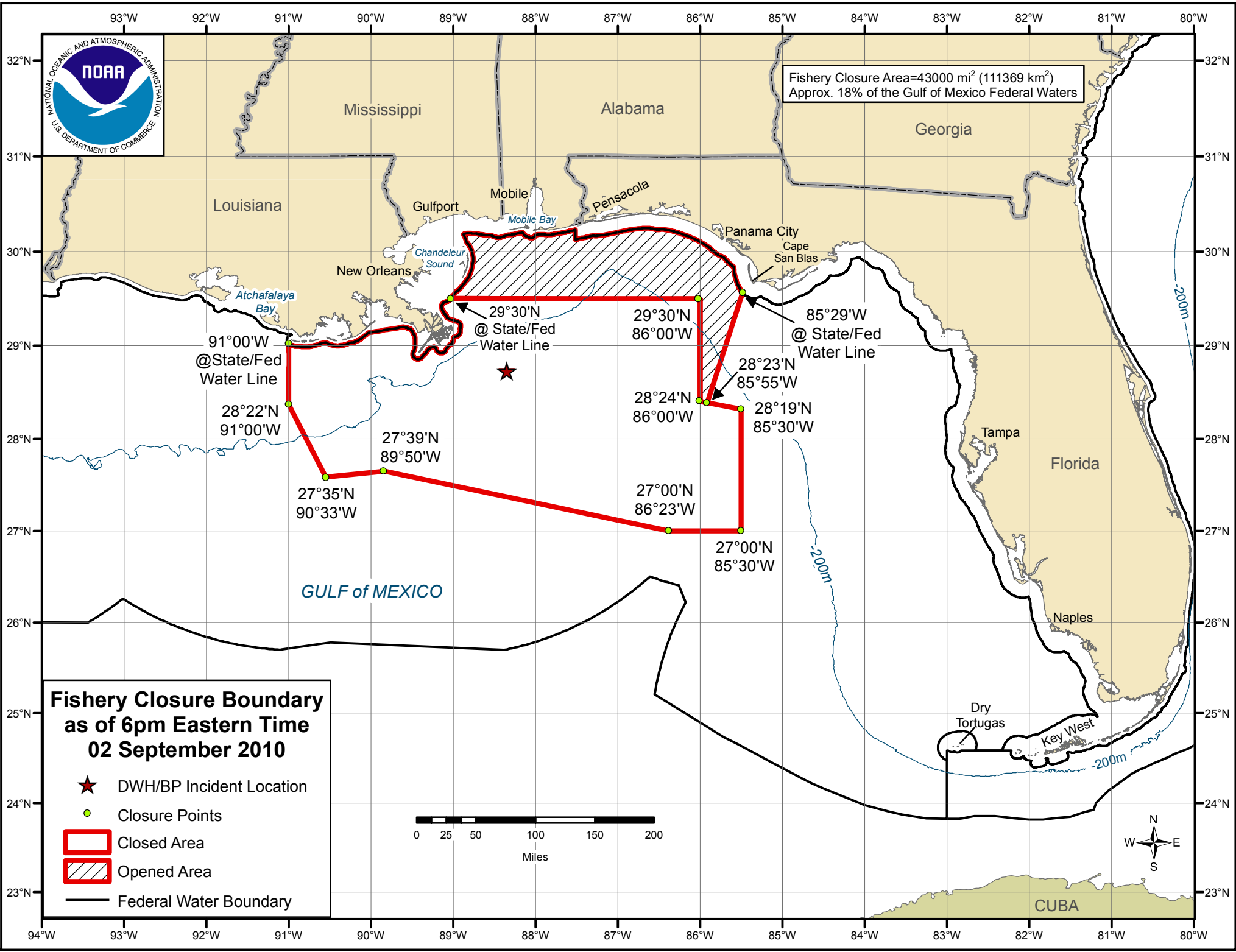


Fishery Closure Area=43000 mi² (111369 km²)
Approx. 18% of the Gulf of Mexico Federal Waters



Fishery Closure Boundary as of 6pm Eastern Time 02 September 2010

- ★ DWH/BP Incident Location
- Closure Points
- ▭ Closed Area
- ▨ Opened Area
- Federal Water Boundary



GULF of MEXICO

