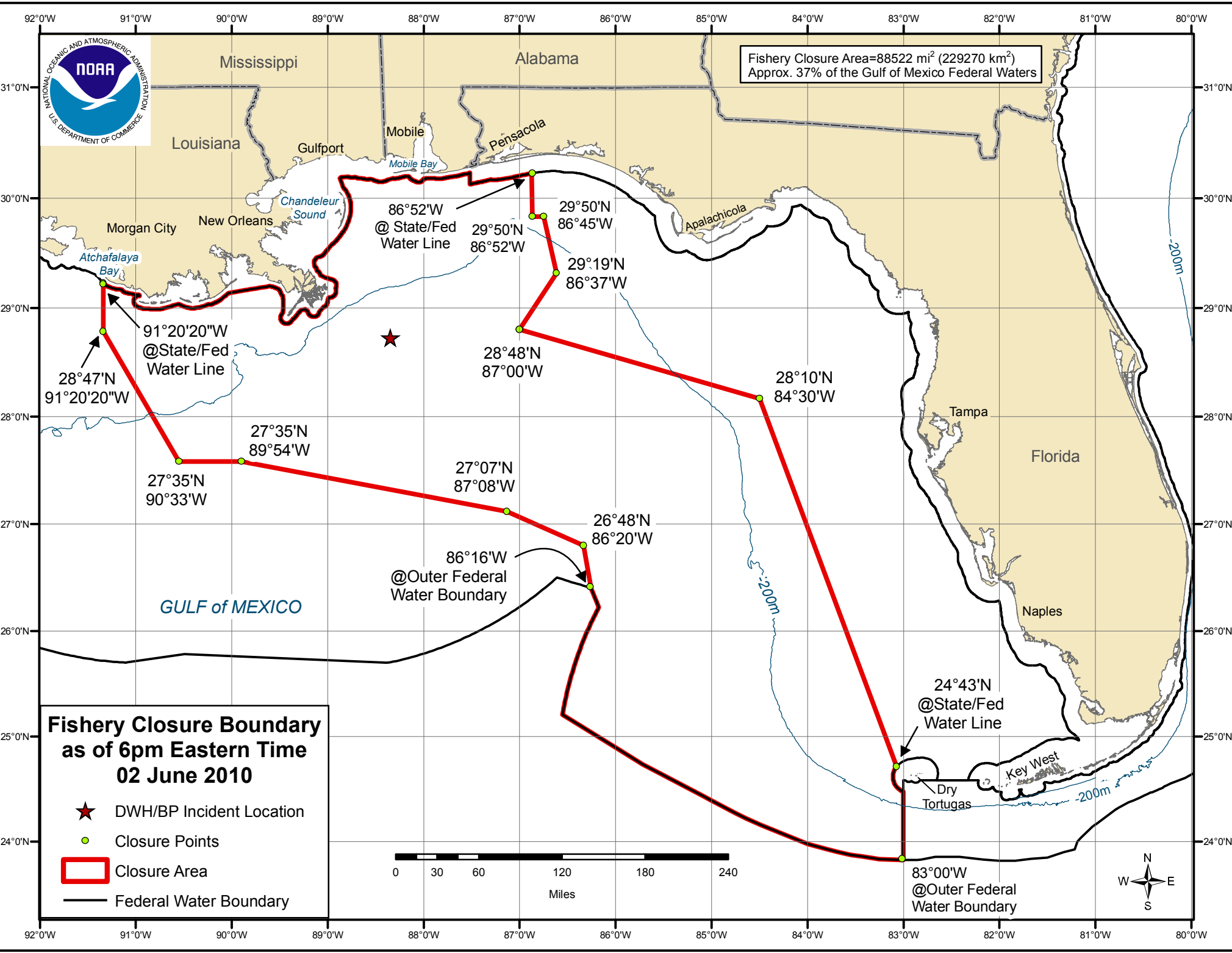




Fishery Closure Area=88522 mi² (229270 km²)
Approx. 37% of the Gulf of Mexico Federal Waters



**Fishery Closure Boundary
as of 6pm Eastern Time
02 June 2010**

- ★ DWH/BP Incident Location
- Closure Points
- ▭ Closure Area
- Federal Water Boundary

